

BusPlanner[®]Fleet

Online Fleet Management

track maintain report

School buses carry the most precious cargo ever – your students. Having a strong maintenance program for your fleet is essential. BusPlanner[®] Fleet can guide your organization to that goal.

BusPlanner[®] Fleet helps you with:

- **Vehicle maintenance tools** to keep your fleet on the road
- **Inventory management tools** to ensure you have the parts you need
- **A customizable dashboard** for your most critical information
- **Cost management tools** to help you stay within budget
- **Custom reporting** for essential, up-to-date data

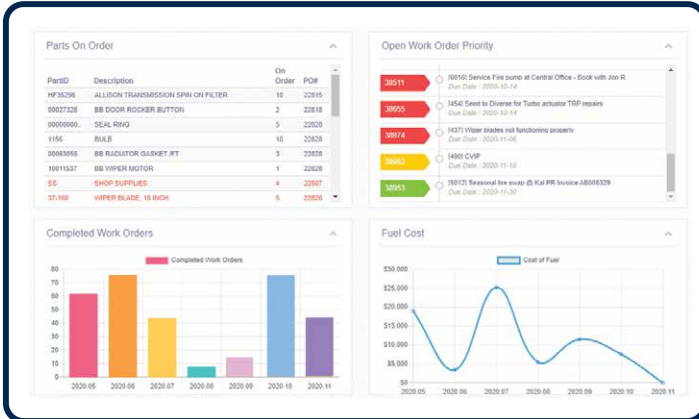


BusPlanner[®]

866.251.3721 | busplanner.com

KPIs for Operational Analysis >

- Downtime for repairs
- Staff work performance
- Fleet cost by job type
- Cost Analysis by category, vehicle, labor, parts, etc.



Fuel Management >

- Fully integrated fuel management solution
- Supports multiple fuel locations – garages and mobile fuel trucks
- Eliminates need for another third-party application

Scalable Technology >

- Customizable dashboard
- Scalable, fully web-based application
- Mobile-friendly, on-demand access
- Customizable user roles and permissions
- Exportable digital database to eliminate paper

Inventory Tools >

- Automated purchase orders & returns – easy, seamless, intuitive
- Catalog parts by vehicle, model, year, category, etc.
- Reordering benchmarks
- Inventory history
- Fuel usage and return – know your fuel efficiency and idling ratio

Vehicle Maintenance >

- Manage work orders by type
- Manage technician assignments
- Push notifications to remind staff of new and outstanding tasks
- View upcoming schedule and know what is coming to your shop
- Vehicle maintenance history



866.251.3721 | busplanner.com